

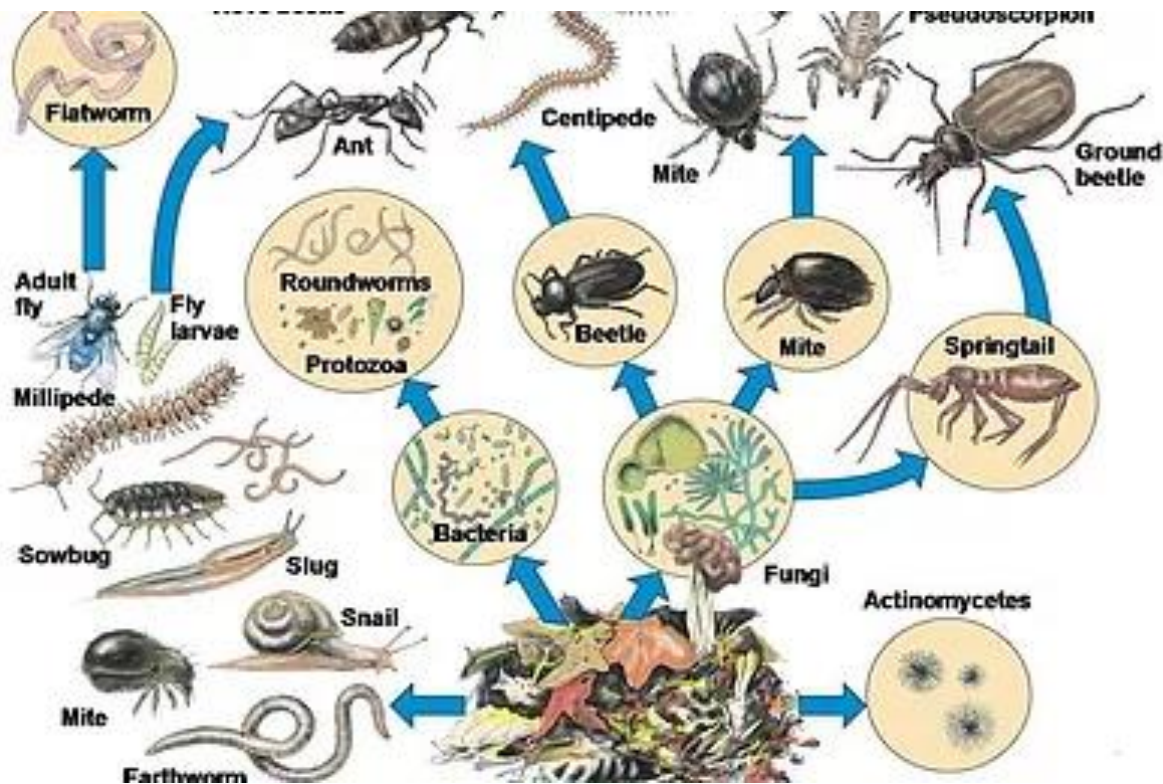
A close-up photograph of a petri dish containing a bacterial culture. The culture is arranged in a grid pattern, with several rows of small, yellowish, circular colonies. The background is a blurred laboratory setting with a person wearing a blue lab coat.

# **PROMOTING RESPONSIBLE SCIENCE**

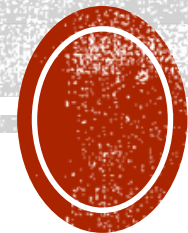
**Moldovan Anna,**

**Ph.D. in biological sciences, scientific researcher,  
Institute of Zoology, lecturer, Moldova State University**



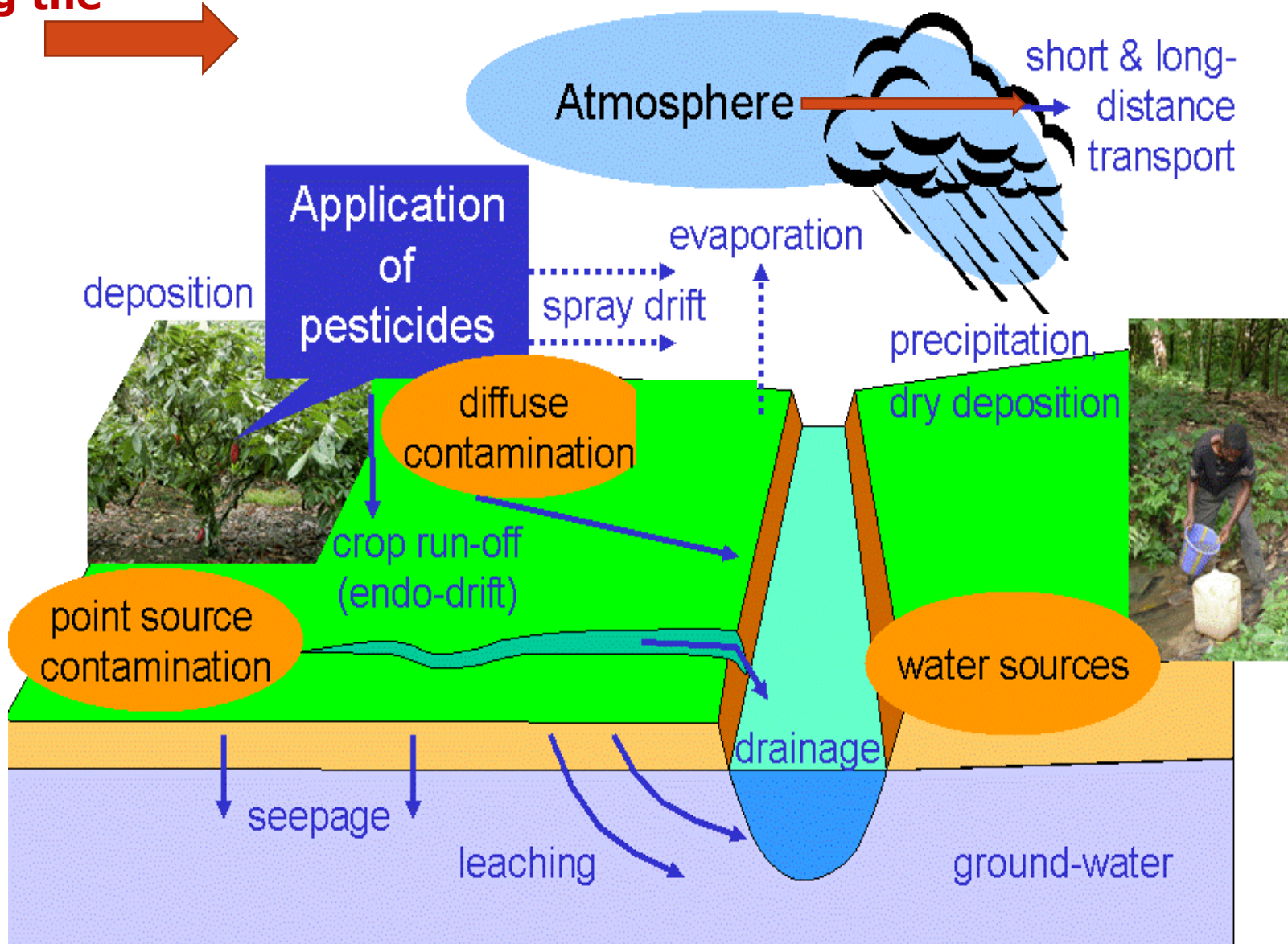


**I. WHAT ARE THE WIDER IMPLICATIONS OF THE AREA OF RESEARCH THAT YOU ARE WORKING ON?**

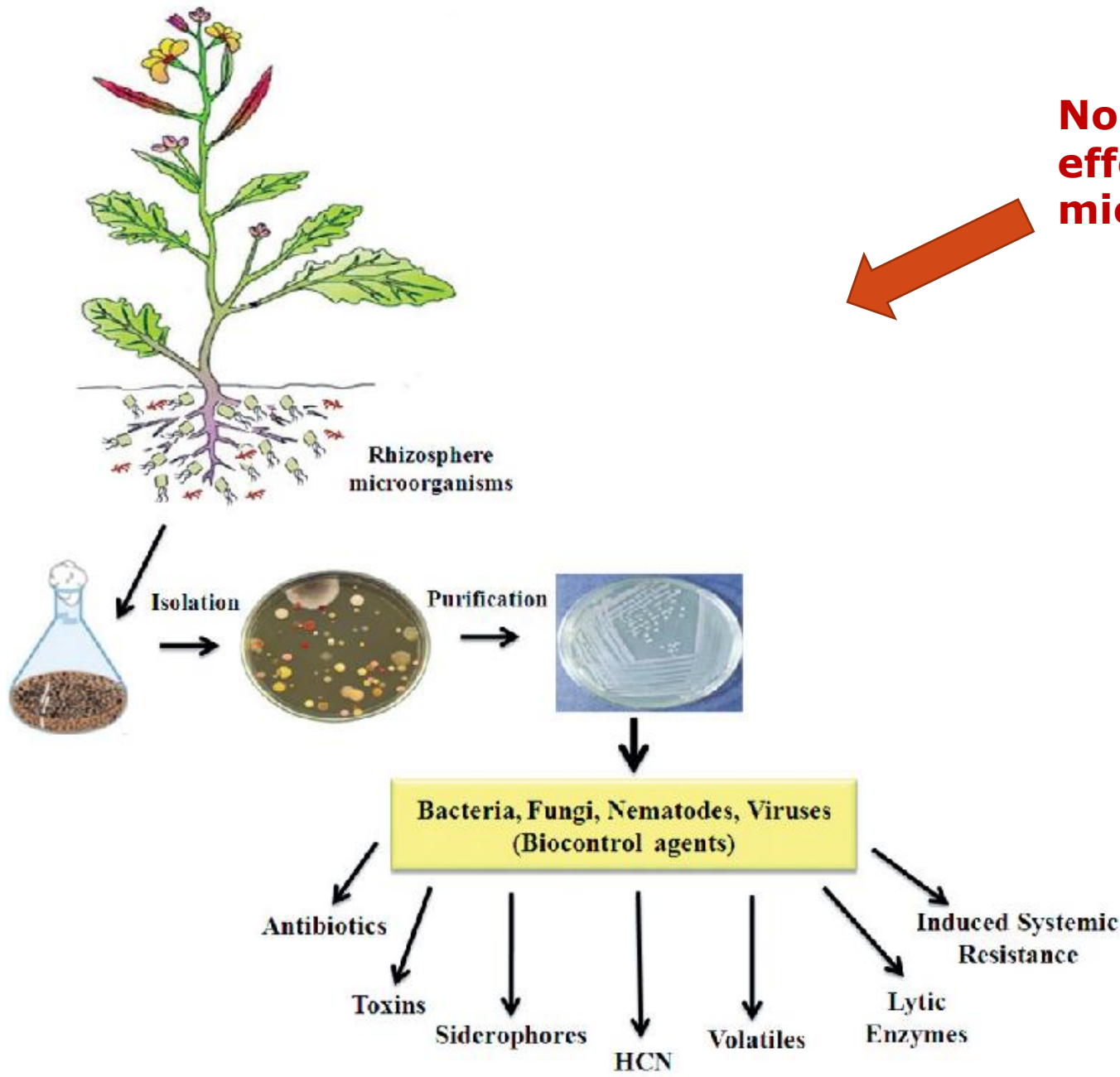


# I. What are the wider implications of the area of research that you are working on?

**Changing the system?** →



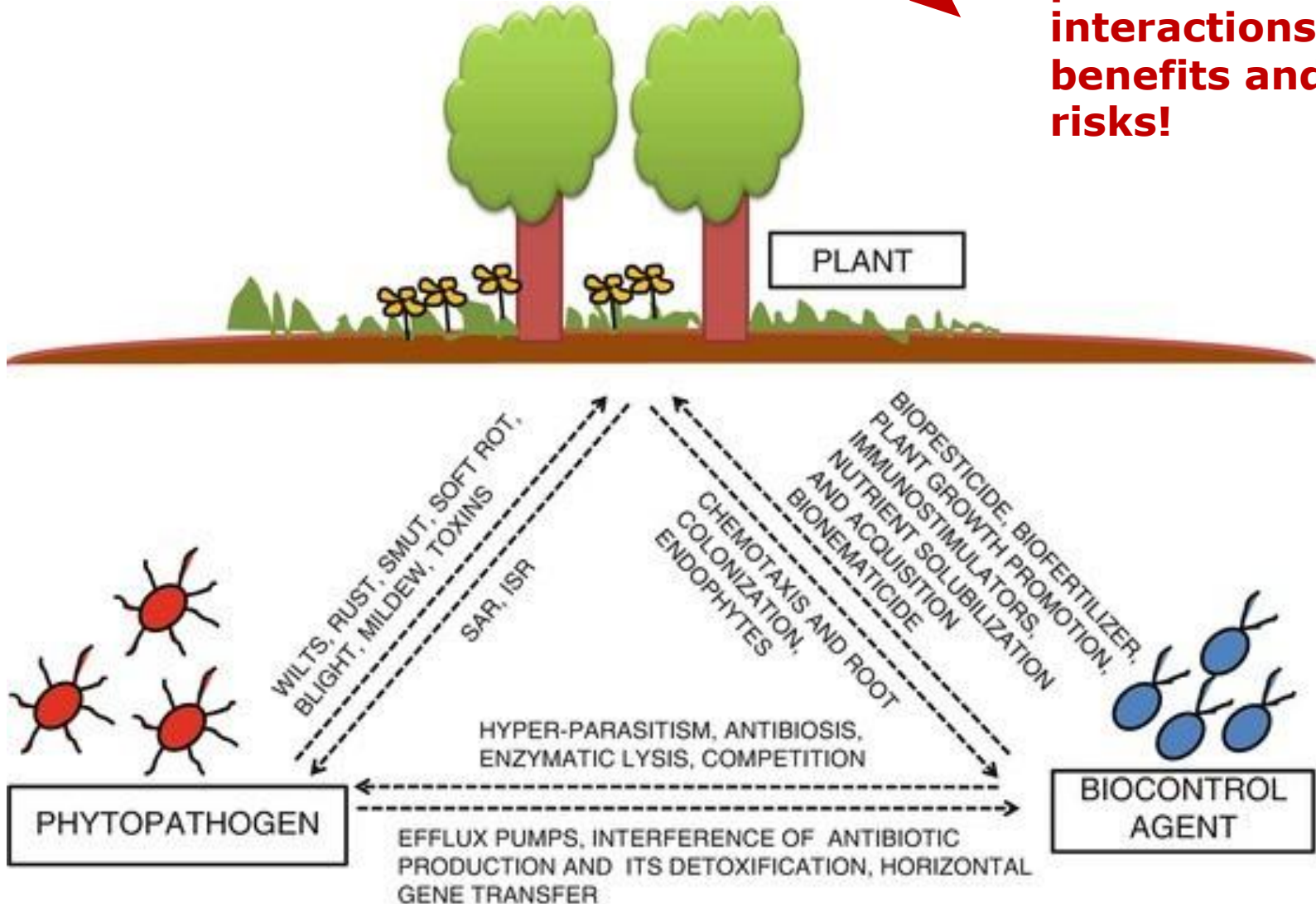
# I. What are the wider implications of the area of research that you are working on?



**Non-intended effects on soil microbiota?**

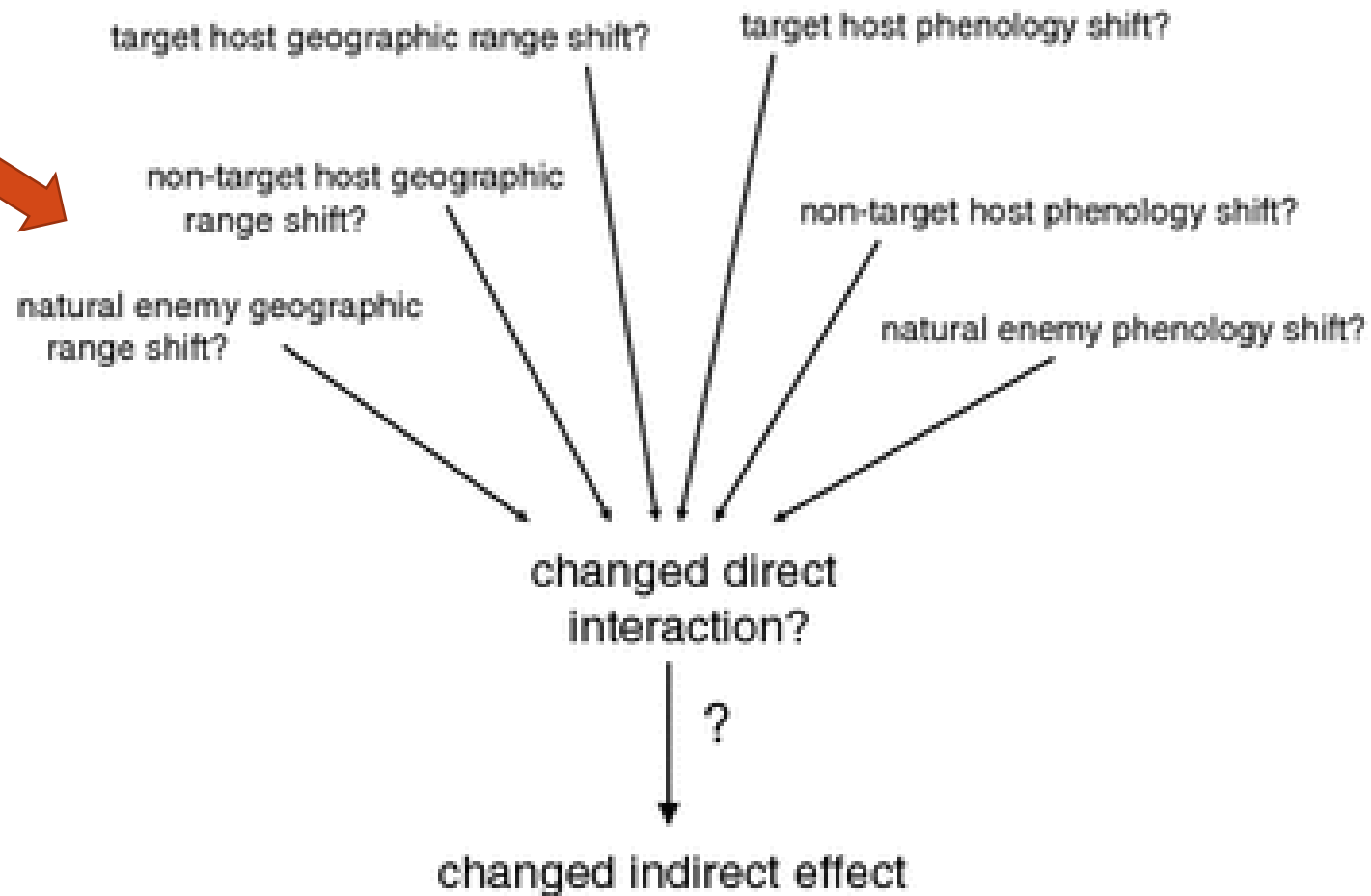


**Responsible use  
of MCAs,  
knowing all  
possible  
interactions,  
benefits and  
risks!**

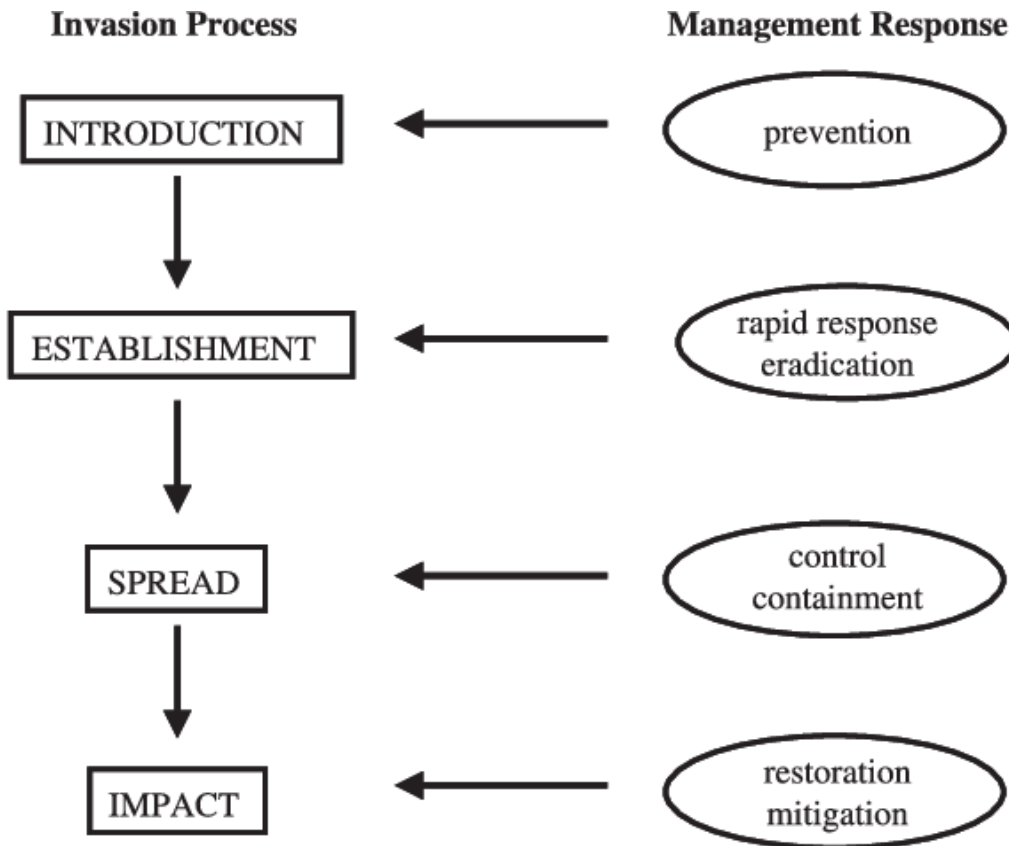


# I. What are the wider implications of the area of research that you are working on?

**Questions to address when evaluating application of BCAs?**



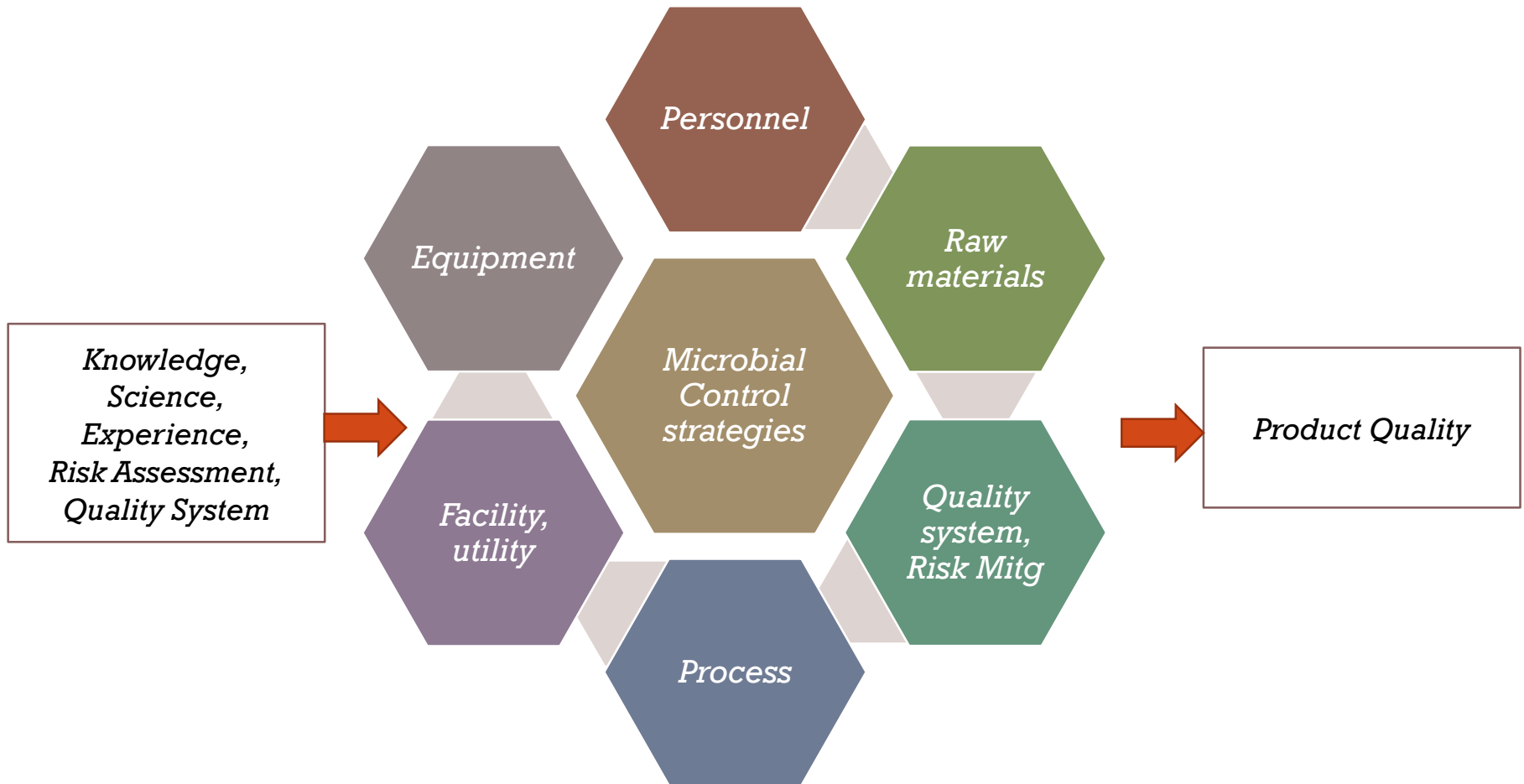
# I. What are the wider implications of the area of research that you are working on?



**Use to prevent,  
eradicate or  
control  
INVASIVE  
SPECIES**



# I. What are the wider implications of the area of research that you are working on?





# I. What are the wider implications of the area of research that you are working on?



**Impact on  
human health  
and  
environment?**





*Direct connection to my field of work!*



*Should be aware of principles of responsible science!*



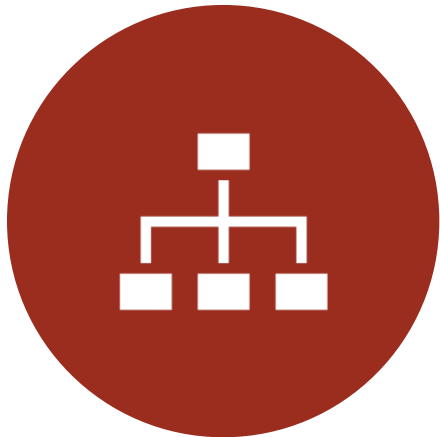
*Take care of being responsible on daily basis when conducting and disseminating research!*

## **II. HOW DO YOU SEE ISSUES OF RESPONSIBLE SCIENCE RELATING TO YOUR WORK?**



### III. Were there any additional topics that could have been covered in this online seminar series and why would it have been useful to cover them?

---



*SET OF RULES AND GUIDELINES  
HOW TO BE RESPONSIBLE  
SCIENTIST.*



*PROTECTION OF SCIENTIST  
CONDUCTING RESEARCH THAT HAS  
WIDE HEALTH, SOCIAL, ECONOMIC  
IMPLICATIONS*



#### **IV. Is there anything that the seminar team could do that would be useful to promote thinking about responsible science in the work of you and your colleagues?**



*Youtube videos explaining the principles of responsible science and rising awareness among end users.*

*Conducting webinars for a wider audience.*

*Education of young generations.*

*Editing a guidebook to be largely disseminated.*



Thank you for  
attention